

Male' Declaration  
Networking Meeting  
13 October 2005  
New Delhi

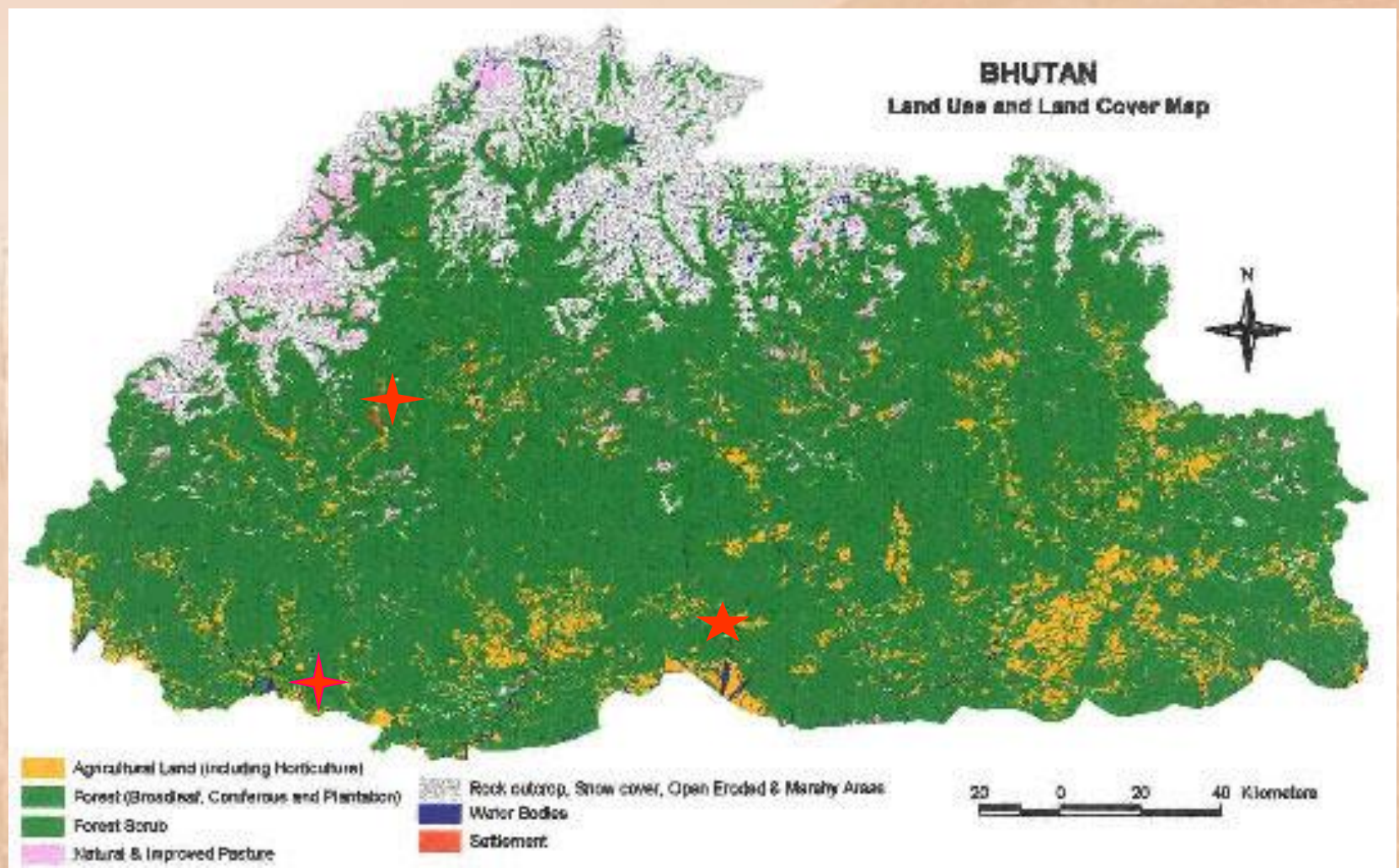


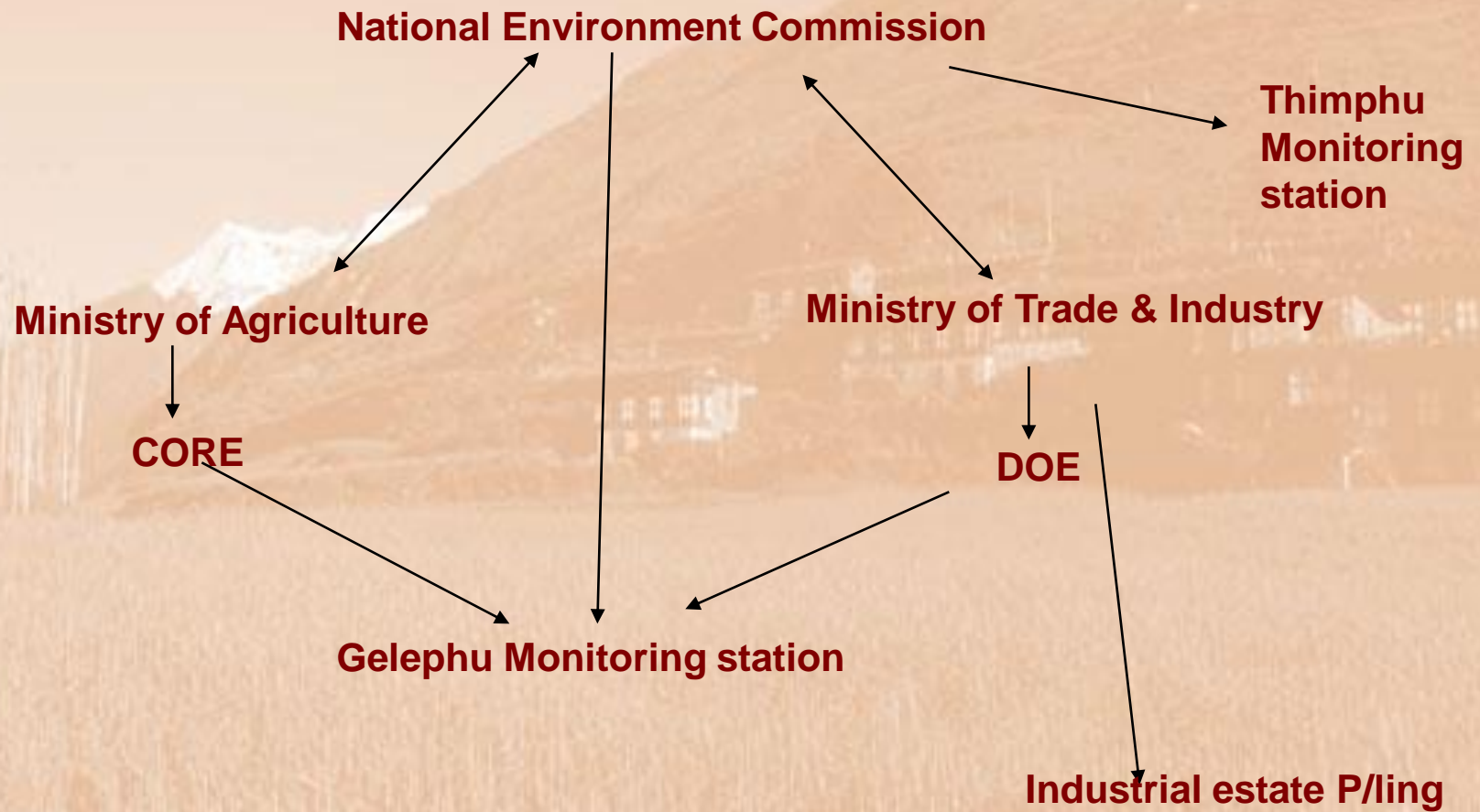
Nedup Tshering  
National Environment Commission  
NIA/IA

11- 15 October 2005



# Map of Bhutan







**PM10 sampling – this will soon be demolished within this month. Next location right now we don't know.**



# Data



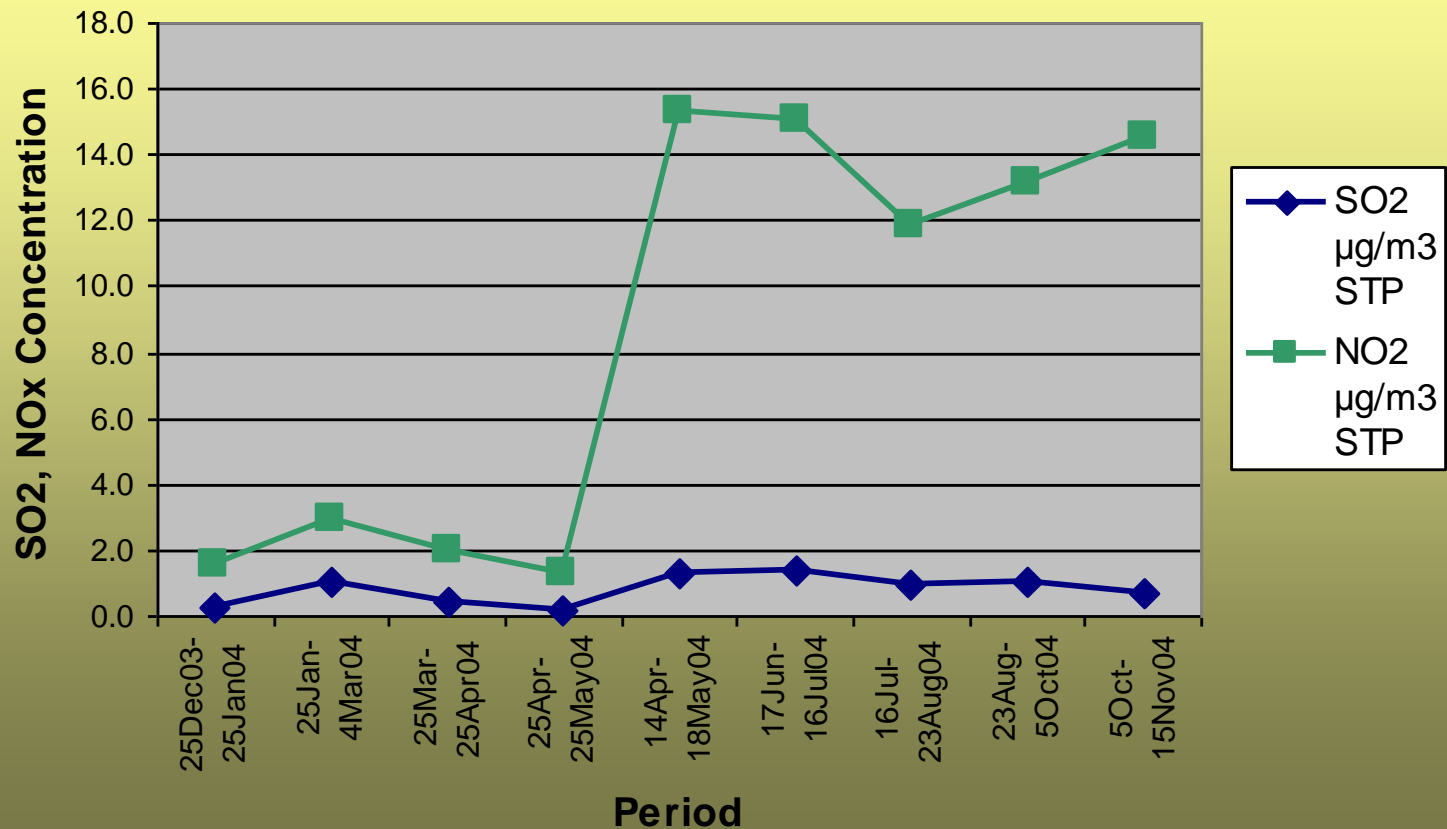
- Wet and Dry deposition
- PM10
- Passive Sampling NO<sub>2</sub> and SO<sub>2</sub>



# Doubts about our data



**Bhutan: Data analysis report of Diffusive Samplers  
(Year 2004)**



# Challenges and Difficulties



- Challenge:
  - Human resources
  - Inter-ministerial coordination
  - Political turbulences
- Difficulties
  - Database although there is some hope
  - Human Resources need constant update
  - Equipment need constant maintenance
  - Situation status
    - Transportation, electricity, internet, human resource and incentives as it is inter-organizational arrangements





# Plan for next 3 years

- Institutional setup could probably changes due to the evolving in the present government system
  - Decentralization of responsibilities
  - Enforcement of proper data management
  - Improve or add new monitoring station ??
  - Capacity buildings
  - Improve monitoring methods



# Monitoring plans

- Existing monitoring station to continue the same parameters
- New monitoring station(s) should have the facility to carry out speciation and biological monitoring system
- Plans to develop emission inventory and model in the new stations and locations



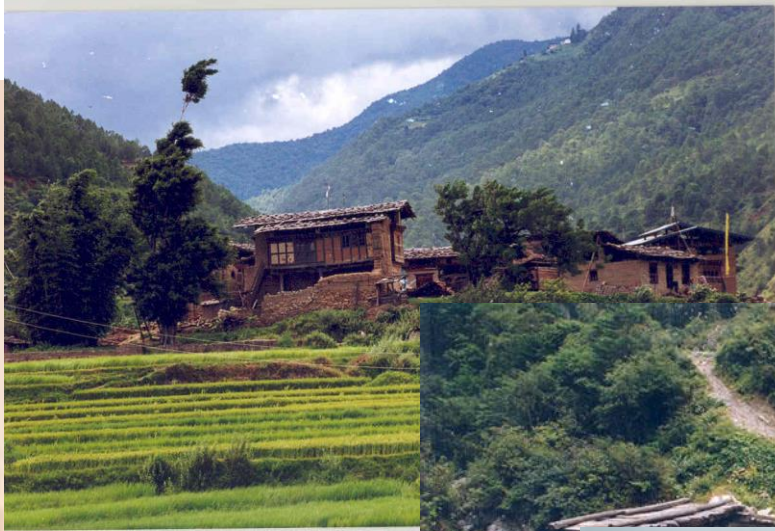
# Impact assessment

- The below mentioned impact assessment are purely assumption.
  - Health impacts by MOH
    - Will it be indoor or outdoor, we should look at their priority
  - Crop Impacts by MOA
  - Corrosion impact yet to decide ??? Who should carry out
  - Acidification by MOA
- However, there is a need to conduct a coordination meeting before identifying the types of impacts that need to be done in Bhutan

# How can we work?



- Data collection and analysed is very important, but to carry out this activity, there should be strong commitment from such program.
- This could further be developed into simple language for policy purpose and decision-makers to understand so that we could successfully continue the program
- The recommendation to the decision makers should be short, simple and sweet.





Tashi Delek!